

HIGHLIFE® COLLECTION

JETSETTER® LX



FreshWater®
Salt System Ready



100% Filtration
SilentFlo Circulation



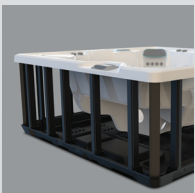
Moto-Massage® DX



Super Energy
Efficient



Wireless Remote



Polymer Substructure
& Base Pan



Shown with Alpine White Shell
and Charcoal Cabinet

People	Seating	Jets	Voltage
3 Seats	Lounge	30 Jets	230 V

Size

7' x 5'8" x 33" | 213 cm x 173 cm x 84 cm

Water Care

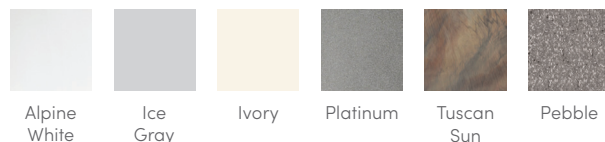
FreshWater® Salt System Ready

HIGHLIFE® COLLECTION

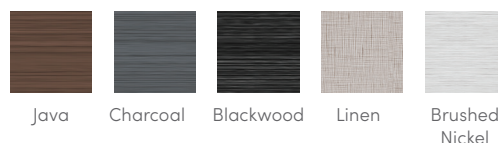
JETSETTER® LX



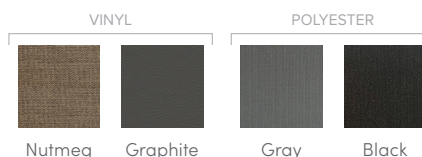
SHELL COLORS



CABINET COLORS



COVER COLORS



CABINET AND SHELL COLOR OPTIONS*

Cabinet Colors	Java	Charcoal	Blackwood	Linen	Brushed Nickel
Shell Colors	Alpine White Ice Gray Ivory Tuscan Sun Pebble	Alpine White Ice Gray Platinum Tuscan Sun Pebble	Alpine White Ice Gray Platinum	Alpine White Ivory Tuscan Sun Pebble	Alpine White Ice Gray Platinum

LEGENDARY MESSAGE

30 Personalized-Control Jets

- Moto-Massage® Lounge
- Soothing Stream® Seat
- Precision® Jet Seat

EASY WATER CARE

Water Care System	FreshWater® Salt System Ready
Filtration System	100% No-bypass Filtration Exclusive, High-flow Tri-X® Filters 195 sq. ft. Filtration Area

LEADING ENERGY EFFICIENCY

Jet Pump	Wavemaster® 9000; One-speed, 2.5 HP Continuous Duty, 5.2 HP Breakdown Torque
Circulation Pump	SilentFlo 5000® for quiet, continuous filtration
Heater	Titanium No-Fault® 6,000 W / 230 V
Insulation	Multiple Layers of Foam Insulation; Certified to California Energy Commission (CEC) and APSP 14 energy efficiency standards for portable spas
Cover	3.5" to 2.5" tapered, 1.5 lb. density foam core, with hinge seal

SIZE

Dimensions	7' x 5'8" x 33" / 213 cm x 173 cm x 84 cm
-------------------	---

CAPACITY

Seating Capacity	3 seats with lounge
Water Capacity	250 gallons / 950 liters
Weight	515 lbs. / 235 kg dry; 3,125 lbs. / 1,425 kg filled**

ADDITIONAL FEATURES

Cover Lifters	CoverCradle®, CoverCradle II, Lift 'n Glide®, or UpRite® (F/B only)
Steps	Steps are available to match cabinet colors
Entertainment	Bluetooth® Wireless Sound System (Optional)
Control System	IQ 2020® with wireless remote control 230 V / 50 amp, 60 Hz (Includes G.F.C.I. protected sub-panel)
Lighting System	Luminescence® multi-color four-zone

*No special orders or shell substitutions available. Actual colors and products may vary from print representation. See dealer to verify.
**Includes water and 3 adults weighing 175 lbs. each.